



71 WENLOCK DRIVE NOTTINGHAM

£900

A two bedroom unfurnished corner plot apartment, situated within close reach of West Bridgford town centre.

- 1st floor apartment, accessed by a communal stair case (no elevator).
- Spacious lounge with bay fronted window.
- Kitchen to include appliances (fridge / freezer, washing machine and dishwasher).
- Two bedrooms.
- Neutrally decorated throughout.
- Access to communal gardens.
- Allocated parking space.



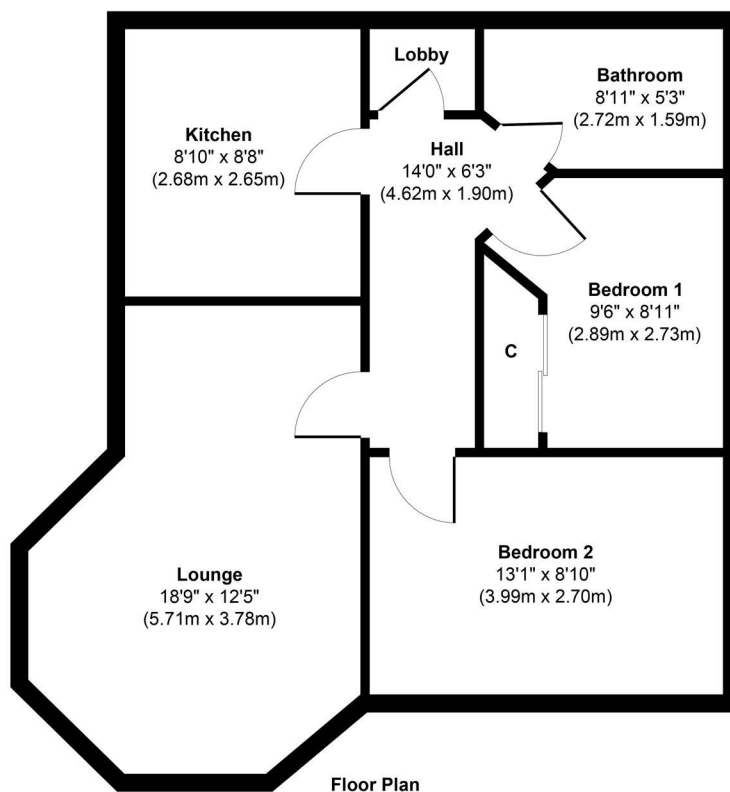
- 1st floor corner plot apartment • One allocated parking space • Kitchen to include appliances • Access to communal gardens



- Two bedrooms • Close to West Bridgford town centre • Within easy reach of Nottingham City Centre • Gas central heating • Council tax band = C • EPC Rating = C

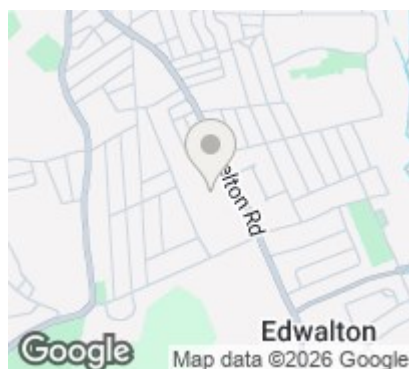


71 Wenlock Drive, West Bridgford



Approx. Gross Internal Floor Area 604 sq. ft / 56.12 sq. m

Illustration for identification purposes only, measurements are approximate, not to scale.
Produced by Elements Property



| Energy Efficiency Rating | | |
|---|-------------------------|-----------|
| | Current | Potential |
| Very energy efficient - lower running costs | | |
| (92 plus) A | | |
| (81-91) B | | |
| (69-80) C | 79 | 79 |
| (55-68) D | | |
| (39-54) E | | |
| (21-38) F | | |
| (1-20) G | | |
| Not energy efficient - higher running costs | | |
| England & Wales | | |
| | EU Directive 2002/91/EC | |

EPC Rating: C Council Tax Band: C

Agents Note: Whilst every care has been taken to prepare these particulars, they are for guidance purposes only. All measurements are approximate and are for general guidance purposes only and whilst every care has been taken to ensure their accuracy, they should not be relied upon and potential buyers/tenants are advised to recheck the measurements

Nottinghamshire
1 East Circus Street
Nottingham
NG1 5AF

01157043163
enquiries@kingswoodrim.co.uk
www.kingswoodrim.co.uk

kingswoodresidential
investment management